

Fact Sheet

Timeline

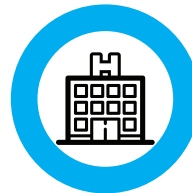
- 2006** Acquisition of six hospitals: North West Private, The Valley Private, Gosford Private, Lingard Private, Belmont Private and South Eastern Private
- 2007** Acquisition of five hospitals: Currumbin Clinic, Dubbo Private, La Trobe Private, Toronto Private and Maitland Private
- 2009** Acquisition of Brunswick Private and Hunter Nursing
- 2011** Acquisition of Mayo Healthcare Group
- 2012** Acquisition of Hurstville Private
- 2014** Acquisition of Brisbane Waters Private, Marian Centre and Townsville Private
- 2016** Opening of Robina Private
- 2017** Acquisition of 13 hospitals: Abbotsford Private, South Coast Private, Shellharbour Private, Bega Valley Private, Forster Private, The Hills Clinic, Westmead Rehabilitation, Eden Rehabilitation, Gympie Private, Mackay Rehabilitation, Boulcott Private, Hironnelle Private

Key Statistics



35 hospitals

across 5 states, 4 capital cities and major regional areas in Australia and 1 in New Zealand



7,000 employees

working in HealtHe Care's portfolio of businesses

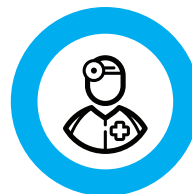


2,500 beds

in some of Australia's and New Zealand's premier private hospital facilities



Over 630,000 patient days per annum



Over 110,000 operations performed per annum



Over 2,500 babies delivered each year